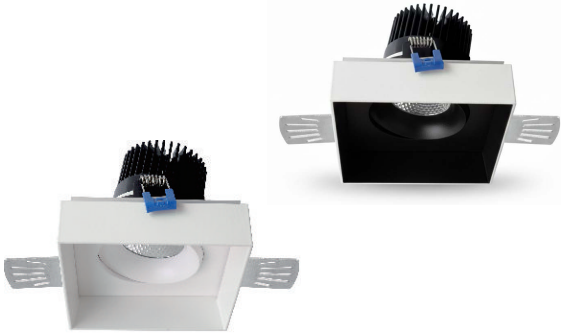


3.5" Single Head Recessed LED Trimless Gimbal Light



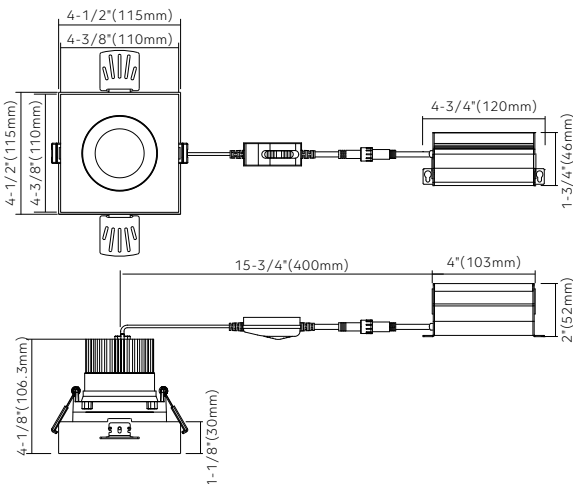
Single-Head Trimless Fixture



Key Features

- 3.5" square recessed LED trimless combo with integrated driver in connection box
- Smooth trimless look with easy screw-mount installation
- Type IC rated — no housing required
- 5CCT selectable (2700K / 3000K / 3500K / 4000K / 5000K)
- LED source with <3 SDCM color uniformity
- 15° tilt + 360° rotation for flexible aiming
- Voltage surge protection, reliable low-temperature operation, and extended driver lifetime
- Die-cast aluminum construction
- TRIAC dimming 100–10% (0-10V optional)
- Suitable for insulated ceilings, indoor & wet locations
- 70% light output at 50,000 hours
- cETLus certified, 5-year limited warranty

Dimensions



Specifications

Models	HB-TG35S
Applications	Sloped ceiling, highlighting artwork
Wattage	12W
Color Temperature(K)	5CCT 2700/3000/3500 /4000/5000
Delivered Lumen(lm)	1000
Halogen Equivalent	100W
Beam Angle	38°
CRI	>90 (CRI 97 optional, special order)
Driver Input	120V AC (120-347V optional)
Power Factor	0.9
Dimming	TRIAC dimmers 100%-10% (0-10V dimming optional)
Cut out	4-5/8" x 4-5/8" (116x116mm)
Approved Location*	Insulated ceiling, Indoor & Wet location
Ambient Temperature	-20°C to +40°C
Air Tight	Yes
Projected Life	70% light output at 50,000 hours
Certification	cETLus
Warranty*	5-year limited warranty

* Due to continuous improvements and innovations, specifications may change without notice

120V Input Driver Included



Accessories

AC120V driver



Model: G35RS-X
(Aluminum version)

AC120-347V driver



Model: Mulv12-X
(Steel version)

Extension cables (2pin)



For single CCT or multiple CCT fixtures with CCT switch on the wire
Model: LR-EXC6 6' 2pin cable
LR-EXC10 10' 2pin cable
LR-EXC20 20' 2pin cable

Ordering Guide

Example: HB-TG35S12W5CCTWHT

Series	Wattage	Color Temperature	Voltage	Finish	Trimless
HB-TG35S	12W	5CCT (2700K/3000K/3500K/4000K/5000K)	Blank AC 120V Mulv AC 120-347V	● MW (Matte White) ● MB (Matte Black)	T