

# LDM-2835-120D Low Voltage Flexible LED Strip



## LDM-2835-120D-12V

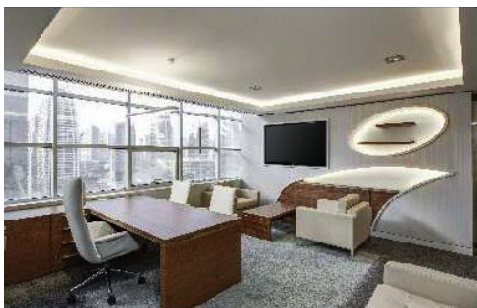


### Key Features

- Light source: 120 pcs/m SMD2835
- Material: superior and heat-resistant 8mm PCB
- Input voltage: DC 12V
- RA>80
- Lifespan: 30,000 hours
- Easy installation, cuttable and joinable, Accessories complete

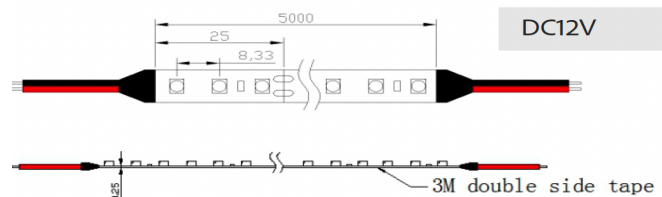
### Application:

- Cove lighting, Architectural lights for canopy corridor Archway,
- Backlight or edge lighting for signage DIY lights for home use
- Path and contour marking
- Decorative lights for holiday event show



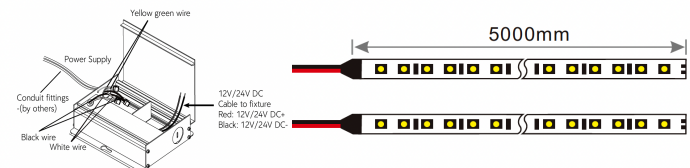
Specifications	
Models	LDM-2835-120D-12V-XXXX
Product Size(mm)	5000*8*0.25   10000*8*0.25
LED Type	2835 SMD LED
Color Temperature*	3000K   3500K   4000K   5000K
Lumen/Meter	1350   1440
Input Voltage*	12V DC
Current (Amps/meter)	1.5
Min Cuttable Length(mm)	25
Max Power Consumption (Watt/m)	10
CRI	> 80
Driver Input	120V AC
Power Factor	0.9
Dimming	Dimmable
Beam Angle	120°
LED Quantity(per meter)	120Pcs
Net Weight(kg)	0.25
Operating Temperature	-25°C~ +45°C
Storage Temperature	-30°C~ +80°C
IP Rate	20
Estimated Life(Hours)	30,000
Certification	cETLus
Warranty	2-year

### Dimensions

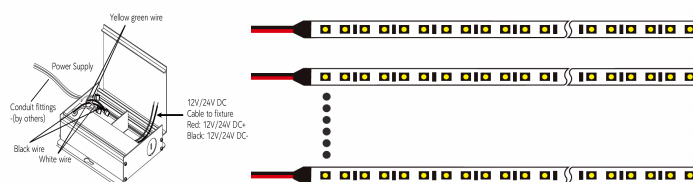


### Linking operation:

The maximum length in series is **5 meters** when led strip is DC 12V



Parallel connection is highly recommended as safe electrical operation mode.



Driver24W12V

Driver60W12V

Driver96W12V

### Ordering Guide

Example: LDM-2835-120D-12V-3000K

Series	LED Type	Voltage	Color Temperature	Size(Meter)
LDM	LED Strip Light	2835-120D	12V	3000K 3500K 4000K 5000K
				5 10