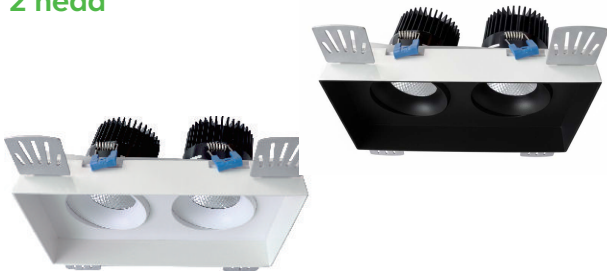


3.5" Double Head Recessed LED Trimless Gimbal Light



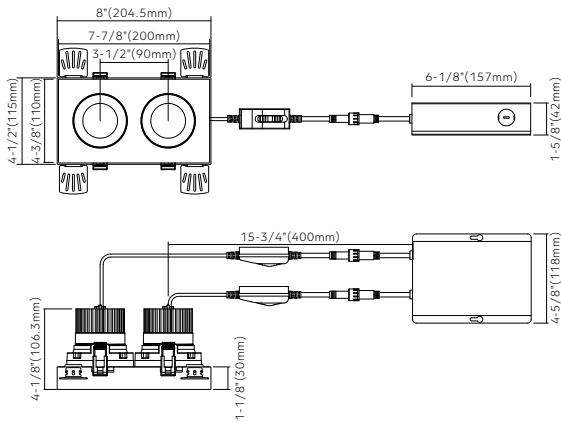
2 head



Key Features

- 3.5" LED double-head trimless combo with integrated driver in connection box
- Smooth trimless design with easy screw-mount installation
- 1-to-2 driver option for faster multi-head installation
- Type IC rated — no housing required
- 5CCT selectable (2700K / 3000K / 3500K / 4000K / 5000K)
- <3 SDCM color consistency for uniform light
- 15° tilt, 360° rotation for precise aiming
- Designed with voltage surge protection, reliable low-temperature operation, and extended driver lifetime
- High-quality TRIAC dimming (0-10V optional)
- Die-cast aluminum construction for durability
- Suitable for insulated ceilings; rated for indoor & wet locations
- 70% light output at 50,000 hours (L70)
- cETLus certified; 5-year limited warranty

Dimensions



Specifications	
Models	HB-TG235R
Applications	Sloped ceiling, highlighting artwork
Wattage	24W
Color Temperature(K)	5CCT
	2700/3000/3500 /4000/5000
Delivered Lumen(lm)	2000
Halogen Equivalent	200W
Beam Angle	38°
CRI	>90 (CRI 97 optional, special order)
Driver Input	120V AC (120-347V optional)
Power Factor	0.9
Dimming	TRIAC dimmers 100%- 10%(0-10V dimming optional)
Cut out	8-1/8" × 4-5/8" (207 × 116 mm)
Approved Location*	Insulated ceiling, Indoor & Wet location
Ambient Temperature	-20°C to +40°C
Air Tight	Yes
Projected Life	70% light output at 50, 000 hours
Certification	cETLus
Warranty*	5-year limited warranty

* Due to continuous improvements and innovations, specifications may change without notice

120V Input Driver Included



Accessories

AC120V driver  Model: G235-X (Aluminum version)	AC120-347V driver  Model: HB12W-MULV-X (Steel version)
Extension cables (2pin) 	For single CCT or multiple CCT fixtures with CCT switch on the wire Model: LR-EXC6 6' 2pin cable LR-EXC10 10' 2pin cable LR-EXC20 20' 2pin cable

Ordering Guide

Example: HB-TG235R24W5CCTWHT

Series	Wattage	Color Temperature	Voltage	Finish	Trimless
HB-TG235R	24W	5CCT (2700K/3000K/3500K/4000K/5000K)	Blank AC 120V Mulv AC 120-347V	● MW (Matte White) ● MB (Matte Black)	T