

Recessed LED Trimless Downlight



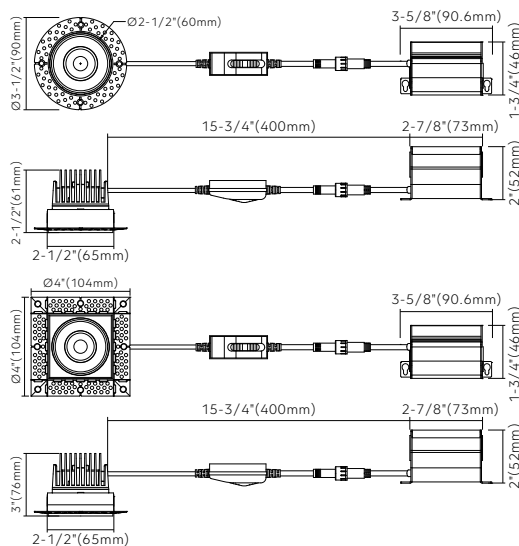
2" Regular



Key Features

- 2" round or square LED trimless downlight with integral driver in connection box
- Type IC rated-no housing needed
- Flexibility to switch color temperature during installation to suit a specific application, just adjust the color temperature with the slide switch located on the wire
- **Smooth trimless look**
- LED source SDCM<3
- Aluminum construction
- **Enjoy the benefits of voltage surge protection, reliable operation in low-temperature environments and longer driver lifetime**

Dimensions



Ordering Guide

Series	Wattage	Color Temperature	Finish	Voltage
HB-2RB	8W	5CCT (2700K/3000K/3500K/4000K/5000K)	● WHT-O (Matte White)	Blank AC 120V
HB-2SB			● BKT-O (Matte Black)	

Specifications

Models	HB-2RB8W5CCTWHT-O	HB-2SB8W5CCTWHT-O
Applications	General lighting	
Wattage	8W	
Color Temperature(K)	5CCT	
Delivered Lumen(lm)	650	
Halogen Equivalent	65W	
Beam Angle	38°	
CRI	>90 (CRI 97 optional, special order)	
Driver Input	120V AC	
Power Factor	0.9	
Dimming	TRIAC dimmers 100%-10%	
Cut out	Ø2-5/8" (67mm)	2-7/8" x 2-7/8" (72x72mm)
Approved Location*	Insulated ceiling, Indoor & Wet location	
Ambient Temperature	-20°C to +40°C	
Air Tight	Yes	
Projected Life	70% light output at 50,000 hours	
Certification	cETLus	
Warranty*	5-year limited warranty	

* Due to continuous improvements and innovations, specifications may change without notice

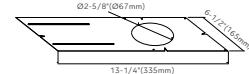
Accessories

AC120V driver



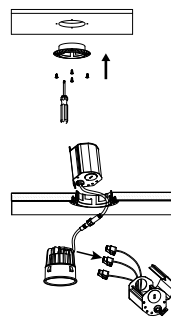
Model: HB8W-X (Aluminum version)

Rough-in plate

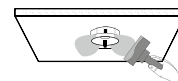


Model: HB-MP-26

Installation

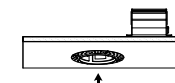


1. Make sure to install plaster frame with arrow pointing upwards (towards the ceiling)



2. Plaster over the mud frame, be careful not to fill past raised rim

3. Connect green wire of cable to green wire on box, white wire of cable to white wire on box, black wire of cable to black wire on box,



4. Insert the fixture to plaster frame, secure the lamp by twisting the fixture twist anti-clockwise to the mud frame

Twist Anti-clockwise

Example: HB-2RB8W5CCTWHT-O