

LDM-COB-384D Low Voltage Flexible LED Strip



LDM-COB-384D

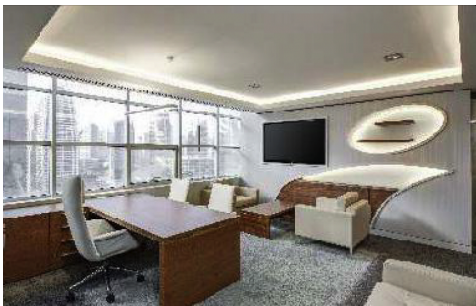


Key Features

- Light source: 384 pcs/m COB
- Material: superior and heat-resistant 8mm PCB
- Input voltage: DC 24V
- RA>90
- Lifespan: 30,000 hours
- Easy installation, cuttable and joinable, Accessories complete

Application:

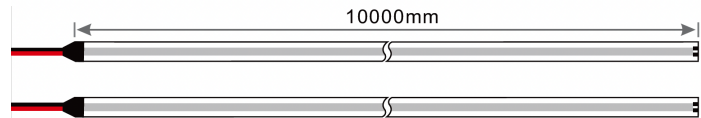
- Cove lighting, Architectural lights for canopy corridor Archway,
- Backlight or edge lighting for signage DIY lights for home use
- Path and contour marking
- Decorative lights for holiday event show



Specifications	
Models	LDM-COB-384D-24V
Product Size(mm)	5000*8*0.25
LED Type	COB
Color Temperature*	3000K 4000K
Lumen/Meter	450 500
Input Voltage*	24V DC
Current (Amps/meter)	0.2
Min Cuttable Length(mm)	21
Max Power Consumption (Watt/m)	5
CRI	> 90
Driver Input	120V AC
Power Factor	0.9
Dimming	Dimmable
Beam Angle	180°
LED Quantity(per meter)	384Pcs
Net Weight(kg)	0.2
Operating Temperature	-25°C~ +45°C
Storage Temperature	-30°C~ +80°C
IP Rate	20
Estimated Life(Hours)	30,000
Certification	cETLus
Warranty	3-year

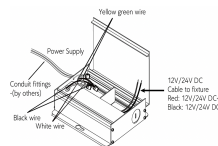
Dimensions

The maximum length in series is 10 meters when led strip is DC 24V



Linking operation:

Parallel connection is highly recommended as safe electrical operation mode.



Driver24W24V



Driver60W24V



Driver96W24V



COB-N8BB-2



COB-N8XB-2



COB-N8BxB-2



COB-N8BLB

Ordering Guide

Example: LDM-2835-120D-24V-3000K

Series	LED Type	Voltage	Color Temperature	Size(Meter)
LDM	LED Strip Light	24V	3000K 4000K	5