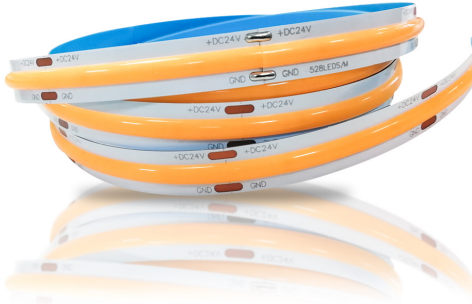


LDM-COB-384D Low Voltage Flexible LED Strip



LDM-COB-384D

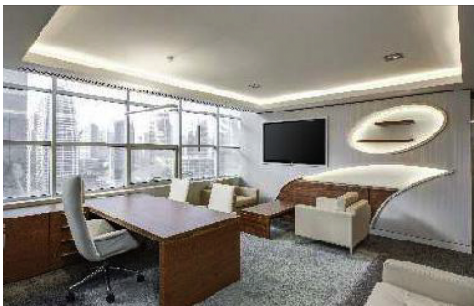


Key Features

- Light source: 384 pcs/m COB
- Material: superior and heat-resistant 8mm PCB
- Input voltage: DC 24V
- RA>90
- Lifespan: 30,000 hours
- Easy installation, cuttable and joinable, Accessories complete

Application:

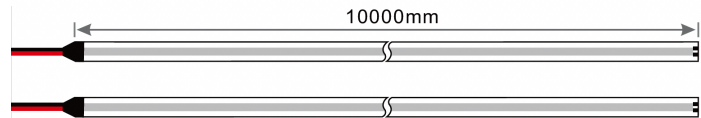
- Cove lighting, Architectural lights for canopy corridor Archway,
- Backlight or edge lighting for signage DIY lights for home use
- Path and contour marking
- Decorative lights for holiday event show



| Specifications | |
|--------------------------------|------------------|
| Models | LDM-COB-384D-24V |
| Product Size(mm) | 5000*8*0.25 |
| LED Type | COB |
| Color Temperature* | 3000K 4000K |
| Lumen/Watt | 100 |
| Input Voltage* | 24V DC |
| Current (Amps/meter) | 0.2 |
| Min Cuttable Length(mm) | 21 |
| Max Power Consumption (Watt/m) | 5 |
| CRI | > 90 |
| Driver Input | 120V AC |
| Power Factor | 0.9 |
| Dimming | Dimmable |
| Beam Angle | 180° |
| LED Quantity(per meter) | 384Pcs |
| Net Weight(kg) | 0.2 |
| Operating Temperature | -25°C~ +45°C |
| Storage Temperature | -30°C~ +80°C |
| IP Rate | 20 |
| Estimated Life(Hours) | 30,000 |
| Certification | cETLus |
| Warranty | 3-year |

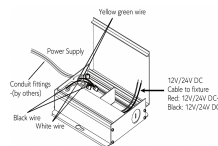
Dimensions

The maximum length in series is 10 meters when led strip is DC 24V



Linking operation:

Parallel connection is highly recommended as safe electrical operation mode.



Driver24W24V



Driver60W24V



Driver96W24V



COB-N8BB-2



COB-N8XB-2



COB-N8BXB-2



COB-N8BLB

Ordering Guide

Example: LDM-2835-120D-24V-3000K

| Series | LED Type | Voltage | Color Temperature | Size(Meter) |
|--------|-----------------|---------|-------------------|-------------|
| LDM | LED Strip Light | 24V | 3000K 4000K | 5 |