

Recessed LED Slim Panel



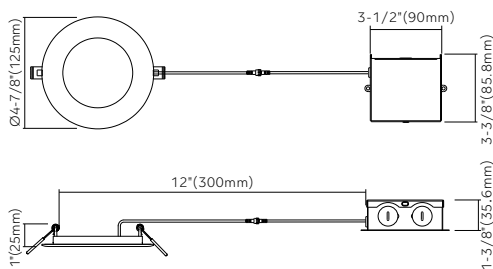
4" LTS design



Key Features

- 4" round LED recessed slim panel with integral driver in connection box
- 1/2" Thick - install directly under joists, maximum layout flexibility
- Type IC rated-no housing needed
- Flexibility to switch color temperature during installation to suit a specific application, just adjust the color temperature with the slide switch located inside the J-box
- Cut hole in ceiling and snap fixture in opening with attached spring clips
- Die-cast aluminum outer frame + aluminum back plate + PS diffuser
- LED source SDCM<5
- **Enjoy the benefits of voltage surge protection, reliable operation in low-temperature environments and longer driver lifetime**

Dimensions



Specifications	
Models	B10011W3CCT
Applications	General lighting
Wattage	11W
Color Temperature(K)	3CCT
Delivered Lumen(lm)	3000/4000/5000
Halogen Equivalent	90W
Beam Angle	120°
CRI	>90
Driver Input	120V AC
Power Factor	0.9
Dimming	TRIAC dimmers 100%-10%
Cut out	4-1/4" (108mm)
Approved Location*	Insulated ceiling, Indoor & Damp location
Ambient Temperature	-20°C to +40°C
Air Tight	Yes
Projected Life	70% light output at 50,000 hours
Certification	ETL
Warranty*	5-year

* Due to continuous improvements and innovations, specifications may change without notice

120V Input Driver Included



Accessories

Goof ring



Model: HBGR4-WH

AC120V driver



Model: LR-D120-15SB (Steel version)

Ordering Guide

Example: B10011W3CCT

Series	Wattage	Color Temperature	Voltage	Finish
B10011W Recessed Slim Panel -4" Round	11W	3CCT (3000K/4000K/5000K)	(Blank) 120V only	● WH (White)

* Other finish are available, please contact our sales to make order for special items