

Recessed LED Trimless Downlight



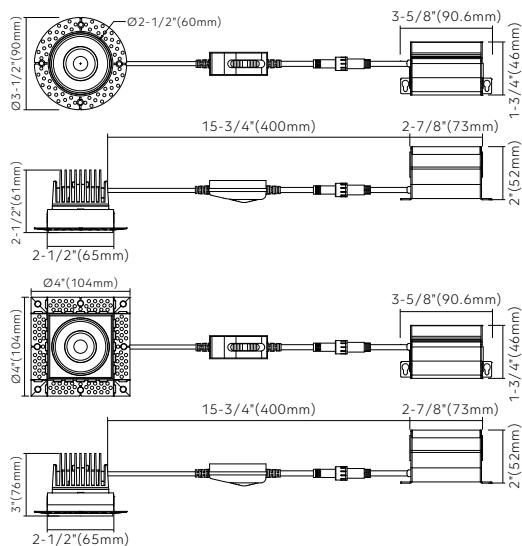
2" Regular



Key Features

- 2" round or square LED trimless downlight with integral driver in connection box
- Type IC rated-no housing needed
- Flexibility to switch color temperature during installation to suit a specific application, just adjust the color temperature with the slide switch located on the wire
- **Smooth trimless look**
- LED source SDCM<3
- Aluminum construction
- **Enjoy the benefits of voltage surge protection, reliable operation in low-temperature environments and longer driver lifetime**

Dimensions



Ordering Guide


Series	Wattage	Color Temperature	Voltage	Finish	
HB-2RB	8W	5CCT (2700K/3000K/3500K/4000K/5000K)	Blank	AC 120V	● WH (Matte White)
HB-2SB					● BK (Matte Black)
					T Trimless

Specifications

Models	HB-2RB8W5CCTWHT	HB-2SB8W5CCTWHT
Applications	General lighting	
Wattage	8W	
Color Temperature(K)	5CCT (coming soon)	
	2700/3000/3500 /4000/5000	
Lumen Output(lm)	550	
Halogen Equivalent	50W	
Beam Angle	38°	
CRI	>90 (CRI 97 optional, special order)	
Driver Input	120V AC	
Power Factor	0.9	
Dimming	TRIAC dimmers 100%-10%	
Cut out	2-5/8" (67mm)	
Approved Location*	Insulated ceiling, Indoor & Damp/Wet location	
Ambient Temperature	-20°C to +40°C	
Air Tight	Yes	
Projected Life	70% light output at 50,000 hours	
Certification	cETLus	
Warranty*	5-year warranty	


Accessories

AC120V driver



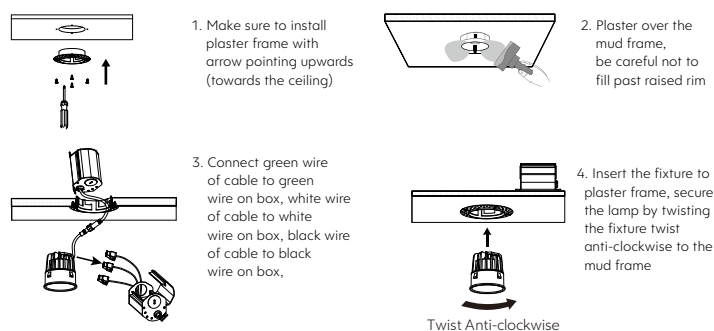
Model: D28A-X (Aluminum version)

Extension cables (2pin)



Model: LR-EXC6 6' 2pin cable
LR-EXC10 10' 2pin cable
LR-EXC20 20' 2pin cable

Installation



Example: HB-2RB8W5CCTWHT