

Recessed LED Combo Downlight



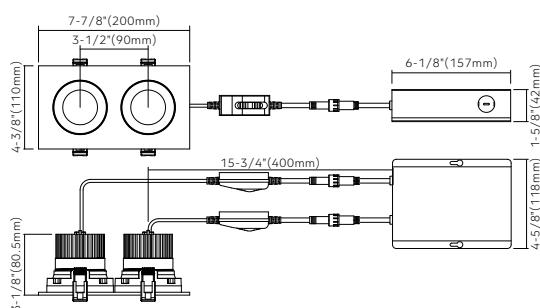
2-light



Key Features

- 3.5" LED multiple of 2-light regressed downlight with integral one to two J-box
- **15° tilting, 360° rotation**
- Type IC rated-no housing needed
- Flexibility to switch color temperature during installation to suit a specific application, just adjust the color temperature with the slide switch located on the wire
- 1 to 2 driver for faster installation
- LED source SDCM<3
- Aluminum construction
- **Enjoy the benefits of voltage surge protection, reliable operation in low-temperature environments and longer driver lifetime**

Dimensions



Ordering Guide

Series	Wattage	Color Temperature	Voltage	Finish
HB-G235R	24W	5CCT (2700K/3000K/3500K/4000K/5000K)	(Blank) 120V only	<div> <div>● WH (White)</div> <div>● BK (Black)</div> </div>

* Other finish are available, please contact our sales to make order for special items

Specifications

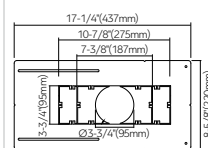
Models	HB-G235R
Applications	Sloped ceiling, highlighting artwork
Wattage	24W
Color Temperature(K)	5CCT
Lumen Output(lm)	2700/3000/3500/4000/5000
Halogen Equivalent	1850
Beam Angle	180W
CRI	38°
Driver Input	>90 (CRI 97 optional, special order)
Power Factor	120V AC
Dimming	0.9
Cut out	TRIAC dimmers 100%-10%
Approved Location*	7-5/16" x 3-3/4" (185x95mm)
Ambient Temperature	Insulated ceiling, Indoor & Wet location
Air Tight	-20°C to +40°C
Projected Life	Yes
Certification	70% light output at 50, 000 hours
Warranty*	cETLus
	5-year

120V Input Driver Included



Accessories

Rough-in plate



Model: ATLDR35-RP-U

AC120V driver



Model: G235-X
(Aluminum version)

Extension cables (2pin)



Model: LR-EXC6 6' 2pin cable
LR-EXC10 10' 2pin cable
LR-EXC20 20' 2pin cable

Example: HB-G235R24W5CCTWH