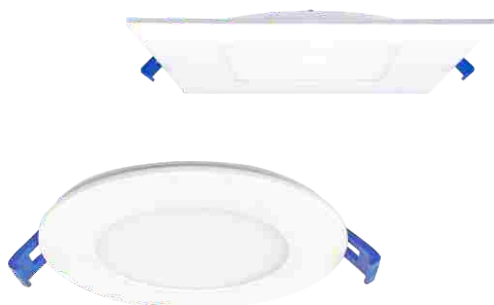


Recessed LED Slim Panel



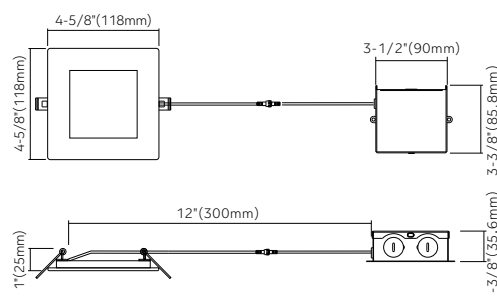
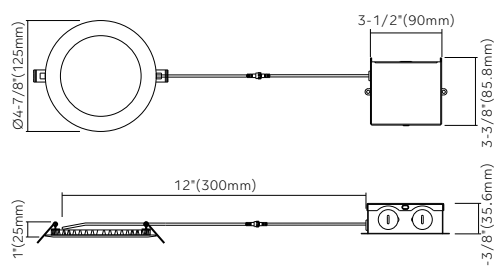
4" Regular Design



Key Features

- 4" round or square LED recessed slim panel with integral driver in connection box
- 1/2" Thick - install directly under joists, maximum layout flexibility
- Type IC rated-no housing needed
- Flexibility to switch color temperature during installation to suit a specific application, just adjust the color temperature with the slide switch located inside the J-box
- Cut hole in ceiling and snap fixture in opening with attached spring clips
- Die-cast aluminum outer frame + aluminum back plate + PS diffuser
- LED source SDCM<5
- **Enjoy the benefits of voltage surge protection, reliable operation in low-temperature environments and longer driver lifetime**

Dimensions



Specifications		
Models	HB-SR4RCCT	HB-SR4SCCT
Applications	General lighting	
Wattage	9W	
Color Temperature(K)	5CCT	
	2700/3000/3500 /4000/5000	
Lumen Output(lm)	550	
Halogen Equivalent	50W	
Beam Angle	120°	
CRI	>90	
Driver Input	120V AC	
Power Factor	0.9	
Dimming	TRIAC dimmers 100%-10%	
Cut out	4-1/4" (108mm)	
Approved Location*	Insulated ceiling, Indoor & Wet location	
Ambient Temperature	-20°C to +40°C	
Air Tight	Yes	
Projected Life	70% light output at 50,000 hours	
Certification	ETL	
Warranty*	5-year	

120V Input Driver Included



Accessories

Goof ring



Model: HBGR4-WH
(For HB-SR4RCCT)

Ordering Guide

Example: HB-SR4RCCTWH

Series	Wattage	Color Temperature	Voltage	Finish
HB-SR4R Recessed Slim Panel -4" Round	9W	5CCT (2700K/3000K/3500K/4000K/5000K)	(Blank) 120V only	● WH (White)
HB-SR4S Recessed Slim Panel -4" Square				

* Other finish are available, please contact our sales to make order for special items