

Recessed LED Slim Panel

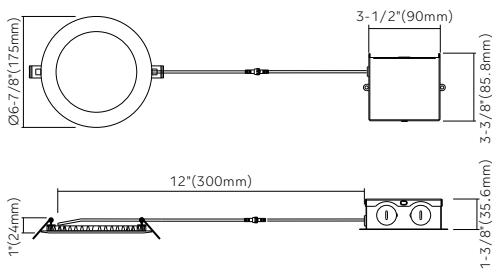
6"



Key Features

- 6" round LED recessed slim panel with integral driver in connection box
- 1/2" Thick - install directly under joists, maximum layout flexibility
- Type IC rated-no housing needed
- Flexibility to switch color temperature during installation to suit a specific application, just adjust the color temperature with the slide switch located on the junction box
- Cut hole in ceiling and snap fixture in opening with attached spring clips
- Die-cast aluminum outer frame + aluminum back plate + PS diffuser

Dimensions



Ordering Guide

Example: HB-SR6R14CCTWH

Series	Wattage	Color Temperature	Voltage	Finish
HB-SR6R Recessed Slim Panel -6" Round	14W	5CCT (2700K/3000K/3500K/4000K/5000K)	(Blank) 120V only	● WH (White)

* Other finish & square shape are available, please contact our sales to make order for special items

Specifications

Models	HB-SR6R14CCT
Applications	General lighting
Wattage	14W
Color Temperature(K)	5CCT(Coming soon) 2700/3000/3500 /4000/5000
Lumen Output(lm)	900
Halogen Equivalent	85W
Beam Angle	120°
CRI	90
Driver Input	120V AC (347V available)
Power Factor	0.9
Dimming	TRIAC dimmers 100%-10%
Cut out	6-1/4" (158mm)
Approved Location*	Insulated ceiling, Indoor & Wet location
Ambient Temperature	-20°C to +40°C
Air Tight	Yes
Projected Life	70% light output at 50, 000 hours
Certification	ETL
Warranty*	5-year warranty

Approved Location*-please contact our sales for outdoor application
Warranty*-refer to Hi-bright warranty policy

120V Input Driver Included

