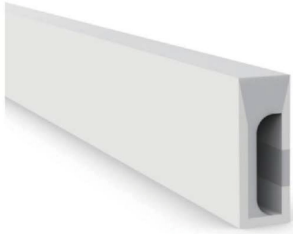


LDM-NH-0408 NEON Light Strip



LDM-NH-0408



Key Features

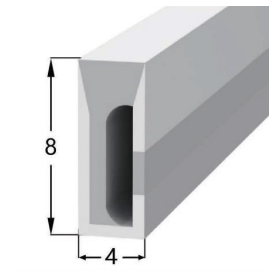
- Uniform and Soft Lighting: Professional structural design ensures even luminance with no visible light spots.
- Durable Silicone Coating: Anti-yellowing and heat-resistant, suitable for outdoor environments.
- Robust and Waterproof: Resistant to corrosion, acid, and alkali, making it ideal for harsh environments with excellent waterproof performance.
- Highly Flexible: Offers excellent flexibility, allowing for versatile shaping and customization.

Application:

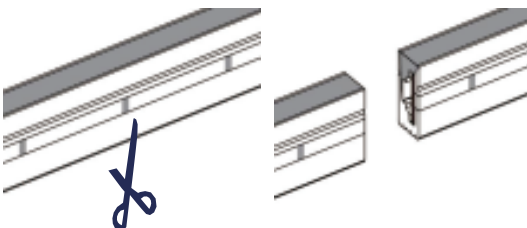
- Architectural Accents: Highlights features in tight spaces with precision lighting.
- Indoor/Outdoor Ambiance: Creates warm, inviting environments in any setting.
- Custom Lighting: Perfect for detailed installations requiring high color accuracy.
- Signage and Displays: Ideal for backlighting and outlining signs.
- Pathways and Landscaping: Durable, waterproof lighting for outdoor use.
- Accent and Cove Lighting: Enhances interior aesthetics with warm white light.

Specifications	
Models	LDM-0408
Product Size(mm)	5000*04*08
LED Type	2835
Single Color Temperature*	3000
Lumen/Meter	400
Input Voltage*	24V DC
Current (Amps/meter)	0.5
Min Cuttable Length(mm)	50
Max Power Consumption (Watt/m)	12
CRI	> 80
Driver Input	120V AC
Power Factor	0.9
Dimming	Dimmable
Beam Angle	180°
LED Quantity(per meter)	120Pcs
Net Weight(kg)	0.25
Operating Temperature	-20~50 °C
Storage Temperature	-30°C~ +80°C
IP Rate	67
Estimated Life(Hours)	30,000
Certification	cETLus
Warranty	3-year

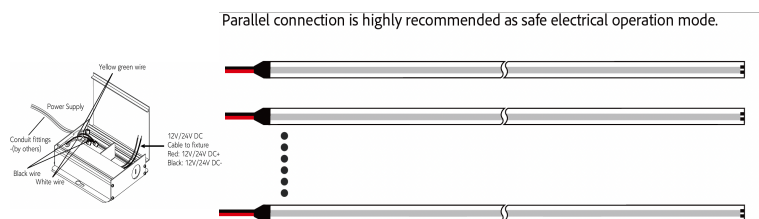
Dimensions



Installation Instructions - Cutting Method



Linking operation:



Ordering Guide

Example: LDM-NH-0408

Series	LED Type	Size	Color Temperature	Size(Meter)
LDM	LED Strip Light	NH 0408	3000K	5