

# Flexible Top View Neon LED Strip Light



## NH-1212

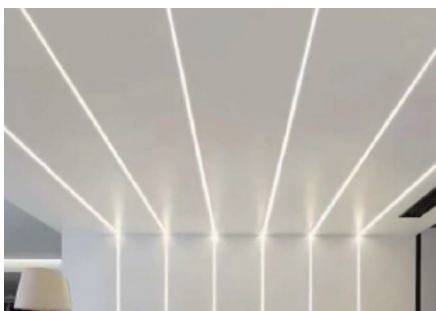


### Key Features

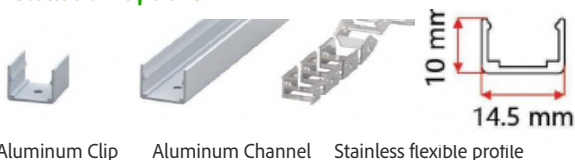
- Ultra-slim 12x12mm profile ideal for tight spaces
- Uniform dot-free glow with COB or high-density SMD2835
- High CRI for accurate color rendering
- Field-cutable for custom lengths
- UV and saltwater resistant silicone for outdoor use
- Flexible horizontal bending – ideal for logos, signage, or architectural accents

### Application:

- Cabinet lighting and shelf illumination
- Cove and indirect lighting
- Architectural contour lighting
- Retail display and showcase
- Outdoor signage and landscape accents



### Installation Options



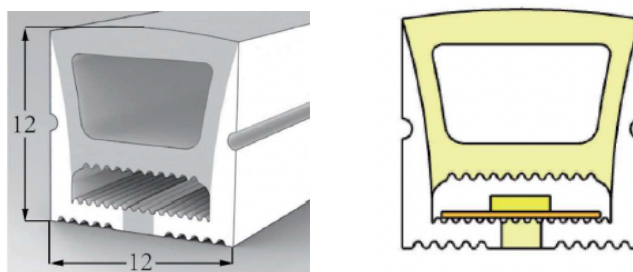
Aluminum Clip

Aluminum Channel

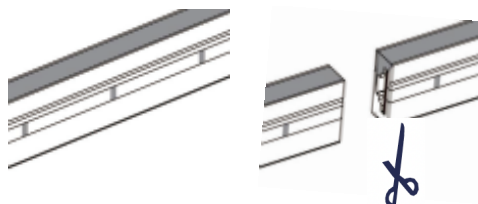
Stainless flexible profile

Specification	
Model	NH-1212-XXXX-XXXX
Product Size	12mm (W) x 12mm (H)
Light Direction	Top View
LED Type	SMD2835 or COB (optional)
PCB Width	5mm - 8mm
Input Voltage	DC12V or DC24V (optional)
Power Consumption	5W-10W per meter (depending on LED type)
Color Temperature	2700K / 3000K / 3500K / 4000K / 5000K
CRI	>90
Luminous Efficacy	SMD2835: 80–100 lm/W; COB: 90–110 lm/W
Cutting Unit	Every 25mm(2700K every 50mm)
Beam Angle	120°
Bending Direction	Horizontal (Top View)
Material	Flexible silicone extrusion
IP Rating	IP67 (Fully sealed & waterproof)
Operating Temperature	-20°C to +50°C
Mounting Options	Recessed or surface mount with clips/profile
Certifications	cETLus
Net Weight	114g/m
Length	Custom cut-to-length available
Warranty	3 Years

### Dimensions



### Installation Instructions - Cutting Method



### Ordering Guide

Example:NH-1212-2835-3000K-24V

Series	Size	LED Type	Color Temperature	Voltage	Length (meter)
NH Neon Light	1212	2835	3000K, 3500K, 4000K, 5000K	12V	Custom Lengths
		COB	2700K, 3000K, 3500K, 4000K	24V	