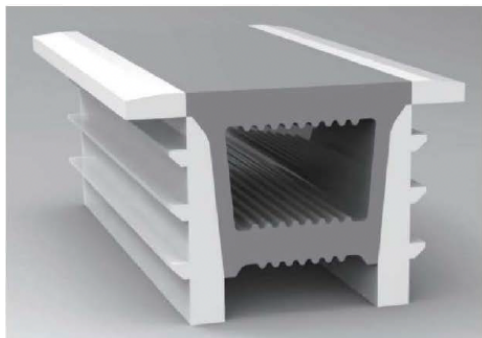


12x12mm Silicone Flexible Neon Housing – Top View



HB-SP1212

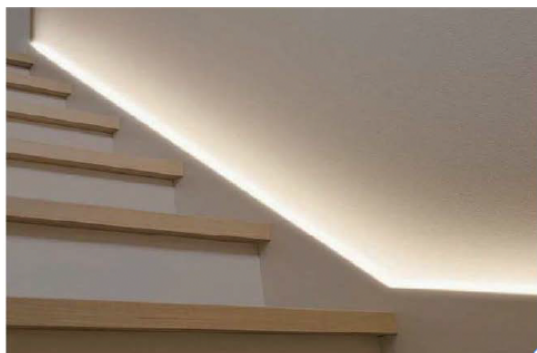


Key Features

- Flexible design for curves and corners.
- UV-resistant, non-yellowing silicone for indoor/outdoor use.
- IP67 waterproof for reliable protection.
- Dot-free lighting with COB or dense SMD strips.
- Supports LED strips up to 10mm wide.
- Easy to install with clips or channels.

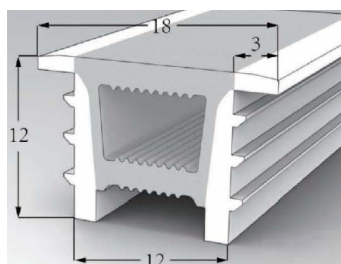
Application:

- Architectural lighting (indoor & outdoor)
- Signage and lettering illumination
- Decorative outlines and edge lighting
- Stair, cove, and under-cabinet lighting
- Landscape and garden lighting
- Retail, hospitality, and commercial projects

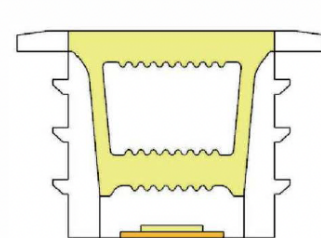


| Specifications | |
|------------------------|--------------------------------------|
| Models | HB-SP1212 |
| Dimensions: | 12mm (W) × 12mm (H) |
| Material: | High-quality UV-resistant Silicone |
| Section Size: | 12*11mm |
| Lighting Direction: | Top View |
| Weight(G/meter): | 124 |
| Ingress Protection: | IP67 waterproof |
| Operating Temperature: | -20°C to +60°C |
| UV Resistance: | Anti-yellowing and weather-resistant |
| Compatible LED Type: | SMD 2835 / RGB / COB LED Strips |
| Max LED Strip Width: | 8mm or 10mm |
| Color: | Milky White |
| Beam Angle: | 120 |
| Bend Radius: | 60 - 80mm |
| Installation Method: | Surface mounted or recessed |
| Storage Temperature: | -20°C~ +120°C |
| Max Length per Roll: | 50 meters (customizable) |

Dimensions



Lighting Direction: Top View



Ordering Guide

Example: HB-SP1212-WH

| Series | Type | Size | Color | Length |
|--------|--------------------------|------|------------------|---------|
| HB | Silicon Flexible Profile | SP | WH (Milky White) | 1 Meter |